



With the ability to hold more than 10,000 spectators, the Los Angeles Tennis Center is one of the nation's premier on-campus facilities.

► The Los Angeles Tennis Center

Located on the UCLA campus nestled just west of Pauley Pavilion and south of Drake Stadium is the impressive Los Angeles Tennis Center: home to both UCLA men's and women's tennis teams.

The LATC was the first large-scale outdoor tennis stadium opened in the Los Angeles metropolitan area and was officially dedicated on May 20, 1984, just in time to host the 1984 NCAA Women's Tennis Championships and the 1984 Olympic Games. Since then, the LATC has been site of several top collegiate and professional tournaments. The NCAA Women's Tennis Championships returned to the LATC in 1987 and '88, while the NCAA Men's Tennis Championships called the LATC home in 1997.

On the professional level, the LATC has been a regular stop of the ATP Tour for many years. The first tournament held at the LATC, the Union 76 Pacific Southwest Open, featured former Bruins Jimmy Connors and Eliot Teltscher in the finals. The tournament, renamed The LA Open, continues to thrive at the LATC each summer.

The LATC features eight lighted, hard-surface courts, a 5,800-permanent seat grandstand around the three main courts and a two-level clubhouse. At full capacity, the LATC can accommodate more than 10,000 spectators. The clubhouse contains locker rooms, coaches' offices and team rooms for both the UCLA men's and women's teams, as well as offices for the Southern California Tennis Association (SCTA).

The second level of the clubhouse features a 4,000-square foot indoor dining area and kitchen. Center court is called the Times-Mirror Center Court. The stadium is named the Straus Stadium and Clubhouse.

Another addition to the LATC came in 2005 when the Greiner Family Scoreboard was added to the back courts. Prior to that, the Budge Offer Family Scoreboard was added to the stadium courts in 2000. Both scoreboards enable fans to follow the action on every court from either location.

The newest project at the LATC was completed in January of 2010, as both the men's and women's teams received a complete renovation of their locker rooms.



The front entrance to the Los Angeles Tennis Center.



In addition to the three stadium courts, the LATC features five back courts.



The men's and women's locker rooms were renovated in 2010.

Administrator Biographies



Dan Guerrero

Athletic Director
14th Year

In 13 years, Dan Guerrero has clearly established a pattern of "image and substance" that few in his profession can match.

UCLA has won 112 NCAA team championships, a figure unmatched by any institution in the nation. UCLA teams have won 26 NCAA championships since his appointment, another national leader, finished second 26 times and have enjoyed an additional 49 Top Five finishes.

More than 80% of UCLA teams have qualified for NCAA post-season competition since 2002. The football team has appeared in 11 bowl games and the men's basketball team advanced to consecutive Final Fours from 2006-08. The program has also won 59 conference championships in 15 different sports, produced nearly 600 All-Americans and featured eight Honda Award winners, including the 2003-04 Collegiate Woman Athlete of the Year.

Furthermore, during the 2012 Summer Olympic Games in London, 32 Bruins participated as athletes or coaches, representing the United States and eight other nations. They won nine medals, including six golds.

Guerrero, recently named the 2014 NACDA Under Armour Athletic Director of the Year award, is the only athletic director at the NCAA Division I level (FBS, FCS and NCAA Division I-AAA) to earn three such awards (2006-07 at UCLA, 2001-02 at UC Irvine). In his 13 years at UCLA, the Bruins have finished second four times and third four times in the race for the Learfield Sports Directors' Cup.

UCLA's academic success under Guerrero is equally noteworthy. Over 13 years and 39 quarters, student-athletes have earned more than 8,500 spots on the Director's Honor Roll. UCLA's Graduation Success Rate (GSR) and Academic Progress Rates (APR) continued their consistent rise this academic year. The Bruin student-athlete GSR is currently at 87%, up 3% from two years ago.

Guerrero came to UCLA in 2002 from UC Irvine, where he had served as UC Irvine's fifth Director of Athletics for 10 years. Prior to arriving at UCI, he was the Athletic Director for five years at Cal State Dominguez Hills (1988-92). He received his Bachelor's degree from UCLA in 1974 and played second base in the Bruin baseball program for four years.

Guerrero was raised in Wilmington, CA. He is married to the former Anne Marie Aniello and they have two grown daughters.



Chris Carlson

Assoc. Athletic Director
2nd Year

Chris Carlson, who previously served the men's basketball program at UCLA for five years, begins his second year as an Associate Athletic Director su-

pervising men's tennis. Carlson will also supervise women's tennis, men's basketball and men's and women's golf.

Prior to returning to UCLA, Carlson worked one year as an Associate Commissioner for the West Coast Conference. Previous to that position, he was the head men's basketball coach at UC San Diego, where he guided the Tritons to the Division II NCAA Tournament in three of his six seasons.

Carlson served five years (2003-07) as Director of Operations for former UCLA basketball coach Ben Howland. At UCLA, Carlson was responsible for the day-to-day operations of the program and served as a liaison to the athletic administration and other school officials. Additionally, he assisted in scheduling and recruiting. Prior to that, Carlson served in the same capacity for two years (2002-03) at the University of Pittsburgh.

Originally from the San Diego area, Carlson joined the Pittsburgh staff (where Howland was the head coach) in the summer of 2001. Before joining Howland at Pittsburgh, Carlson was on Howland's coaching staff at Northern Arizona for one season (1998-99). Howland left NAU a year later to take the Pittsburgh head coaching position. Carlson remained at NAU for two more years (1999-2001), where he worked with the Lumberjacks' post players, along with recruiting and scheduling.

Prior to working at Northern Arizona, Carlson served as an assistant coach at his alma mater, UC Santa Barbara, from 1994-98.

Carlson was also an assistant coach at Dos Pueblos HS in Goleta from 1991-93.

His administrative basketball experience includes his one year at the West Coast Conference (2013) and 12 years as a game management assistant for the National Association of Basketball Coaches All-Star Game. Carlson has also worked four NCAA Tournament West Regionals.

Carlson is a 1993 graduate of UC Santa Barbara with a bachelor's degree in History. He is married to Karen Nance and they have two sons, Nicklas, 12, and Charlie, 9.



Dr. Gene Block

Chancellor
10th Year

Dr. Gene Block became chancellor of UCLA in August 2007. As chief executive officer, he oversees all aspects of the university's three-part mission of

education, research and service.

A champion of public universities, Chancellor Block has called for UCLA to deepen its engagement with Los Angeles, a city that offers a microcosm of the global community, and to increase access for students from underrepresented populations. An advocate of interdisciplinary scholarship, he emphasizes broad-based, campus-wide planning.

Chancellor Block holds UCLA faculty appointments in psychiatry and biobehavioral sciences in the David Geffen School of Medicine and in physiological science in the College of Letters and Science. A fellow of the American Association for the Advancement of Science and a member of the American Academy of Arts and Sciences, he specializes in circadian biology, which deals with the functioning of 24-hour rhythms in higher organisms.

Previously, Chancellor Block served as vice president and provost of the University of Virginia, where he held the Alumni Council Thomas Jefferson Professorship in Biology and directed the National Science Foundation's Science and Technology Center for Biological Timing. He also headed an NIH graduate training program aimed at increasing the number of scientists from underrepresented groups.

A native of Monticello, N.Y., Chancellor Block holds a bachelor's degree in psychology from Stanford University and a master's and Ph.D. in psychology from the University of Oregon.

The inventor of a number of devices, Chancellor Block holds a patent for a non-contact respiratory monitor for the prevention of Sudden Infant Death Syndrome, and he is an avid collector of vacuum-tube radios.

Chancellor Block and his wife, Carol, have two children.

► Women's Tennis Support Staff



Matt Elliott
Compliance



Dr. Michael Teittel
Faculty Athletic Rep.



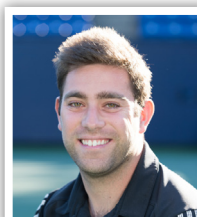
Linda Lassiter
Academic Counseling



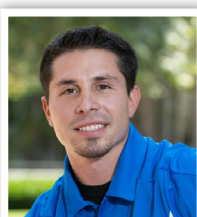
Dominique Cetale
Team Manager



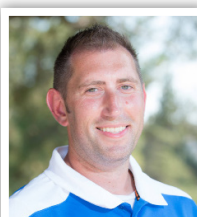
Allie Glover
Team Manager



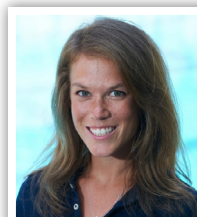
Max Hammer
Director of Operations



Bobby Andrade
Athletic Performance



Max Bertman
Athletic Training



Lindsay Gaesser
Athletic Communications



Tom Solomon
Event Staff